



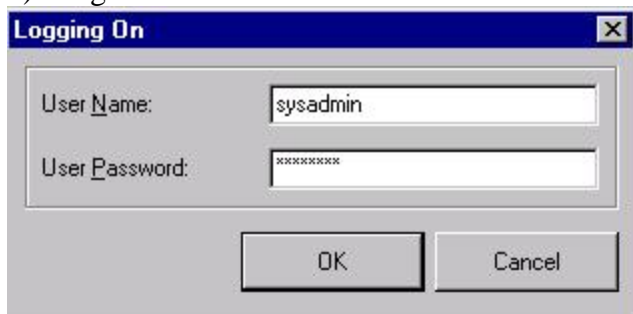
## Recalculate SRO January 2011-Retail Pro V8

How to Schedule SRO to run nightly in order to automatically update sales receiving and on order totals at night.

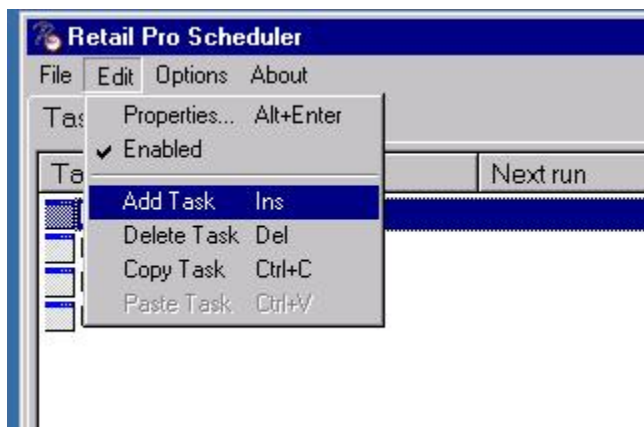
- 1) Double left click on the scheduler icon.



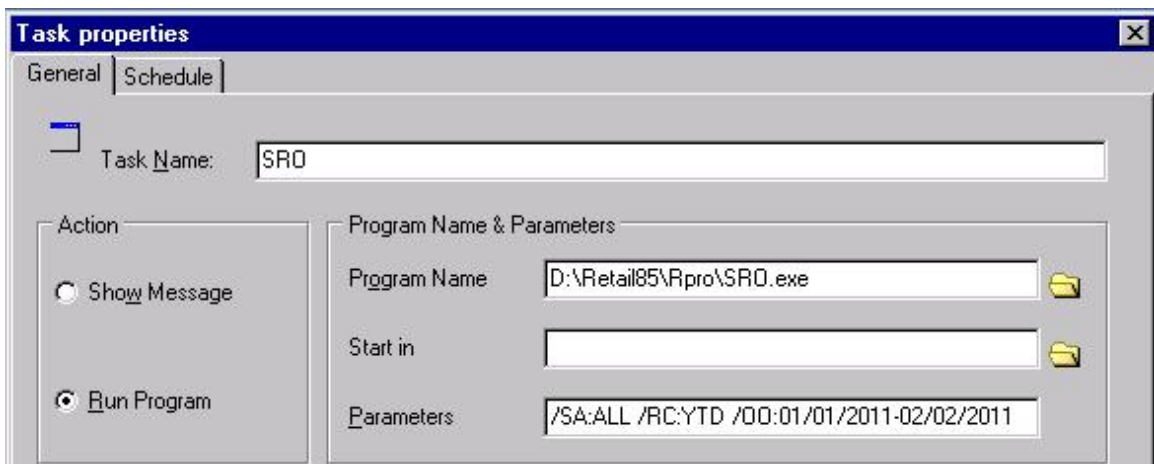
- 2) Login to scheduler.



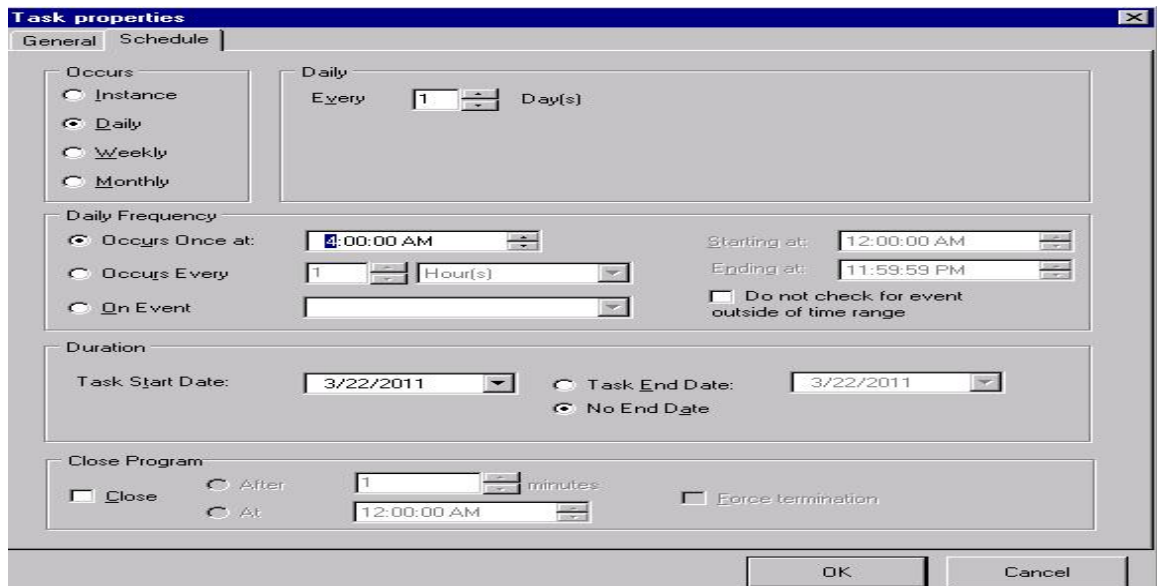
- 3) To add a new task click on edit, and then add task.



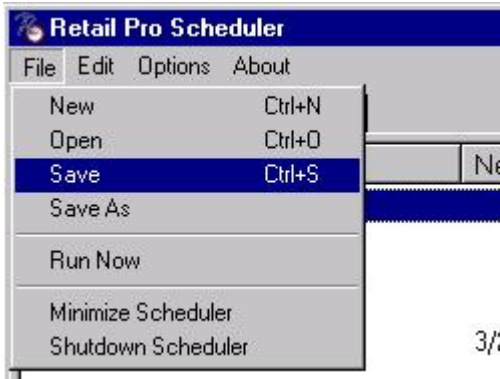
4) The Task properties window will open. Enter “SRO” for the Task Name field, Select the bullet next to “Run Program” in the Action section, Select the folder at the end of the Program Name field and point it to SRO.exe which is normally located in R:\retail8\pro. Lastly we need to set the parameters for SRO to run, for our example we used /SA:ALL /RC:YTD /OO:01/01/2011-02/02/2011 which means:  
 /SA:ALL is the parameter for sales, in this case we want to calc ALL sales  
 /RC:YTD is the parameter for Receiving, in this case we want to look at Year to Date  
 /OO:01/01/2011-02/02/2011 is the parameter for On Order for a specific date range.  
 Make sure the dates are not set to undefined in the windows SRO program, by opening SRO manually and checking dates, the scheduled task may have trouble passing the date range to SRO if the dates are undefined. If you do not include one of parameters, SRO will not recalculate appropriate values, i.e. they will be blank.



5) Select the Schedule tab. Under Occurs section select “Daily”, In the Daily Frequency make sure “Occurs Once at:” is selected and enter the time you would SRO to run. Warning make sure that if you do polling SRO runs outside of your polling period. When you’re done select ‘ok.’



6) Back at the main scheduler screen, make sure you save your new task by selecting file and then save.



A note on available date options, we use the /OO for On Order in this example  
/OO:DAY1-2 - 1 day starting 2 days ago

/OO:WEEKS1-2 - 1 week starting 2 weeks ago

/OO:MONTHS1-2 - 1 month starting 2 months ago

/OO:Today - today

/OO:Yesterday - yesterday

/OO:WTD - week to day

/OO:MTD - mnth to day

/OO:YTD - year to day

/OO:LY\_WTD - last year to day

/OO:LY\_MTD - last year month to day

/OO:LY\_YTD - last year year to day

/OO:ALL - all documents

A "Fixed Date Range" can be included by entry of an empty date placeholder --/--/----

Example:

/OO:--/--/----02/02/2001 = all documents with dates up to 02/02/2001

/OO:02/02/2001---/--/---- = all documents with dates from 02/02/2001

To use ship date instead of order date, you have to use /SHIPDATE as a switch after the OO parameters.