



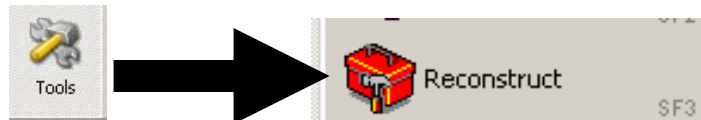
## Scheduling Reconstruct

November 2010 – Retail Pro v8

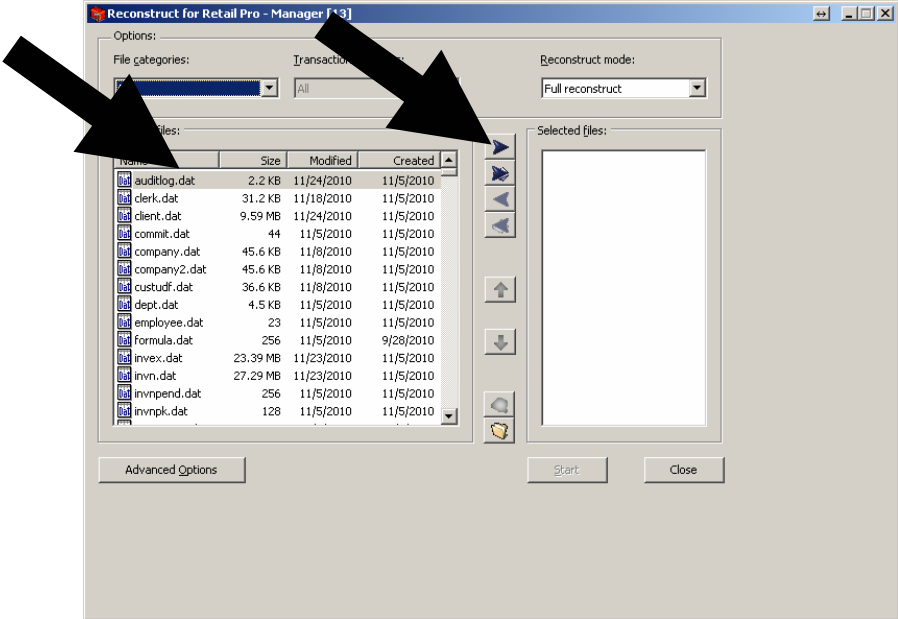
With Retail Pro often times people may need to reconstruct from time to time. Often times this happens at the most inconvenient time. This will show you how to schedule a reconstruct to happen in the middle of the night to catch minor issues before they cause issues during the business day. If you need any help with this please contact BHD support at 916-368-1070

### STEP 1 – Making a file for what to automatically reconstruct

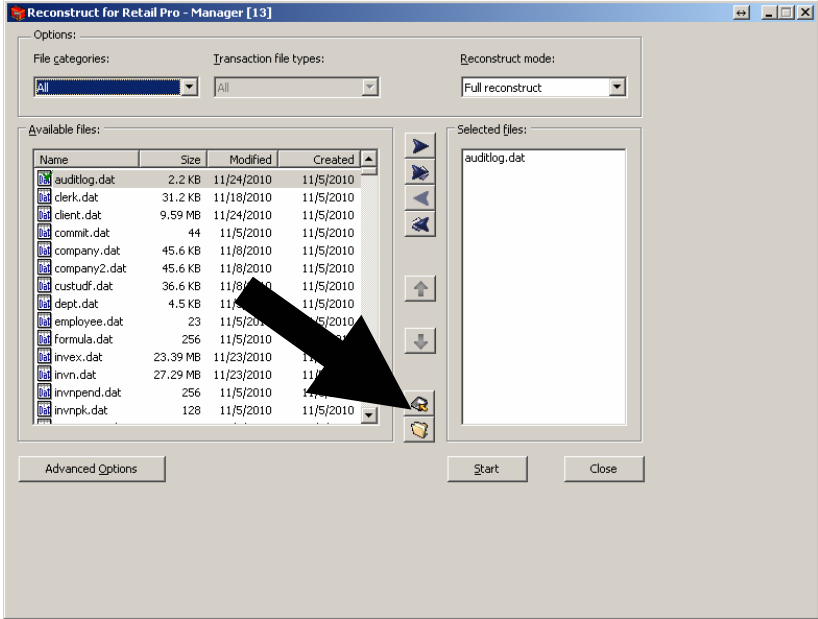
1. From the main screen in Retail Pro select **Tools** and then **Reconstruct**.



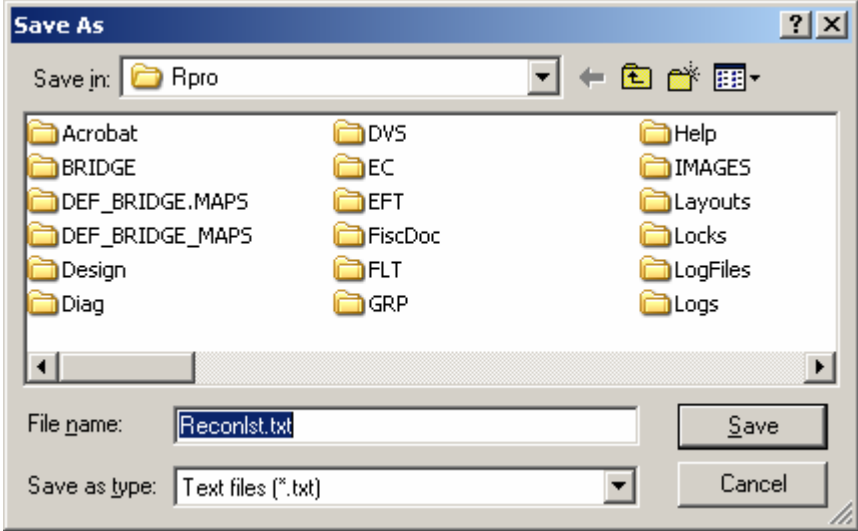
- 2. Select a file on the left hand side and click on the top button in the middle (looks like a single arrow to the right).



- 3. Click on the disk in the middle to save the file.

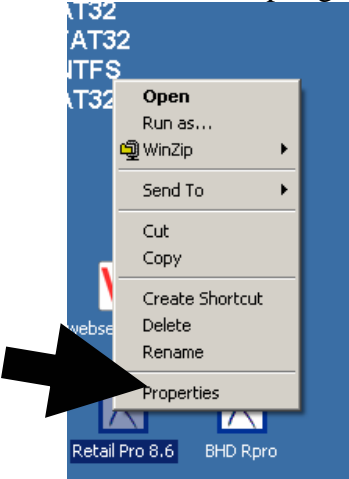


4. Save it with a name you can remember (default is reconlst.txt and is fine).

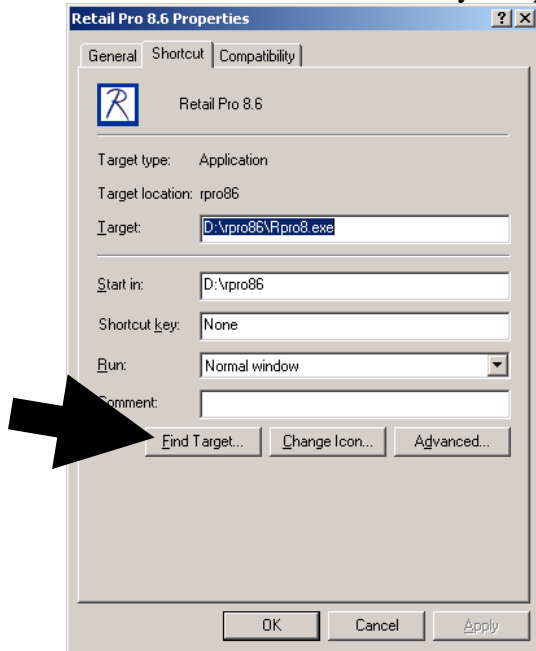


**STEP 2 – Setting the file for reconstructing all files**

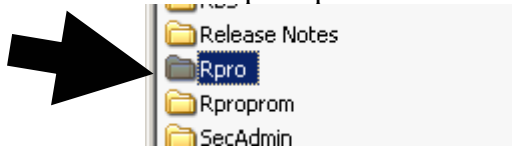
1. From the Desktop, right click on your Retail Pro Icon then left click on **Properties**.



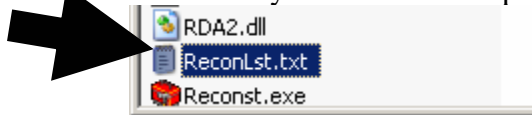
- Click on the Button that either says “Open File Location” or “Find Target”



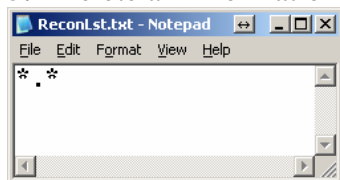
- This will open up a new window. Double left click on the folder “rpro”.



- Find the file you created In Step 1-3 and double left click on it, it should open in Notepad



- Delete all information in the file then type in \*.\*.



- Close and save the file.

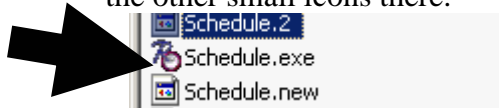
### STEP 3 – Starting the Retail Pro Scheduler

- If you see the icon below by your time in the lower right you can skip this section



- In the same screen you were to open reconlst.txt look for the file schedule.exe (.exe may not be there but the icon should Look like an R with a clock in the lower right)

3. Double left click on the file and it will show up down by your time in the lower right, with all the other small icons there.

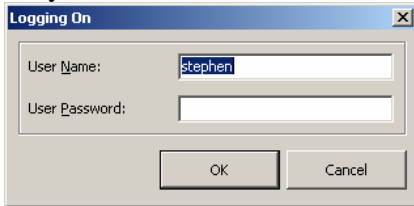


## STEP 4 – Setting the Schedule

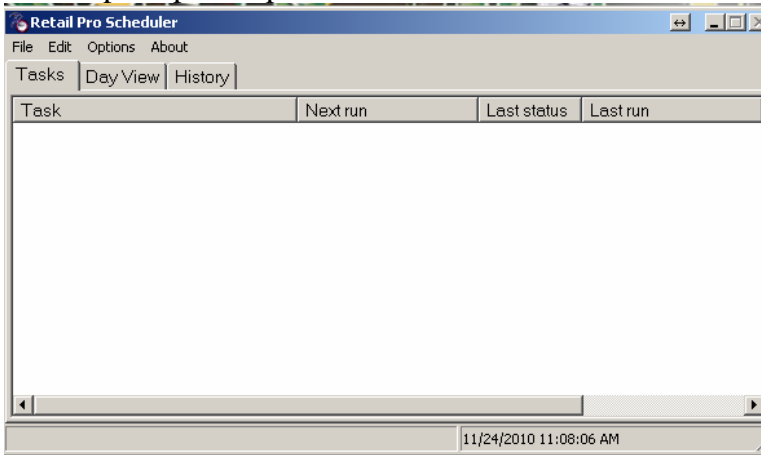
1. Double left Click on The Retail pro scheduler icon by the time



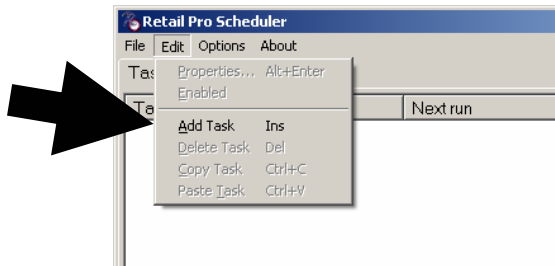
2. Put in your Retail Pro Username and password



3. This will open up the Rpro Scheduler



4. Click on **Edit** then **Add Task**



5. Name it **Reconstruct** or something that will make sense to you.
6. On the left change it to **Run Program**
7. Set the **Program Name**, **Start In**, and **Parameters** (See Example below in image)
  - a. Program Label = <path to retail pro>\rpro\reconst.exe

- b. Start in = <path to retail pro>\rpro\  
 c. Parameters = /list:<file you created in step1-3> /A /F /C /H /M

**Task properties**

General | Schedule

Task Name: Reconstruct

Action

Show Message

Run Program

Program Name & Parameters

Program Name: D:\pro86\Rpro\Reconst.exe

Start in: D:\pro86\Rpro\

Parameters: /list:reconst.txt /A /F /C /H /M

Running Conditions

Run minimized  Log task  Run on Scheduler Start

Don't start if [ ] didn't terminate successfully

Don't start if [ ] is still running

Run after [ ]

Starts Delay 0 minutes

Ends

Security

Requires security authentication

User Name: [ ]

Password: [ ]

Sound Notification

Start with: [ ]

Stop with: [ ]

OK Cancel

8. Click on the **Schedule** tab

9. Change it to **Daily**, **Weekly**, or **Monthly** depending on how often you want it to automatically run (Example Blow would be every day at midnight).

**Task properties**

General | Schedule

Occurs

Instance

Daily

Weekly

Monthly

Daily

Every 1 Day(s)

Daily Frequency

Occurs Once at: 12:00:00 AM Starting at: 12:00:00 AM

Occurs Every: 1 Hour(s) Ending at: 11:59:59 PM

On Event: [ ]

Do not check for event outside of time range

Duration

Task Start Date: 11/24/2010

Task End Date: 11/24/2010

No End Date

Close Program

Close

After: 1 minutes

At: 12:00:00 AM

Force termination

OK Cancel

10. Set how often you want it to run just to the right of the setting for above.

**11. In Daily Frequency** Set the time you want it to run in the middle of the night under **Occurs Once at**: Make sure the timing doesn't conflict with any other scheduled job you have running on any computer ((EX: Polling, auto reports, etc)

**12. Click on OK**

**13. If you didn't have any schedule in there to begin with you will need to give the schedule file a name. If you already had a schedule in there You will need to click on File then Save.**

**14. If This is not the first scheduled job for this computer you can skip to Step 15, if not follow the next few steps**

- a. Left Click on **Options**
- b. Left Click on **Run on Startup**
- c. Left Click on **options** again
- d. Then Left click on **Make Current Schedule Default** (this will not check like the Run on Startup but if you click on it it saves the current schedule to automatically run.)

**15. Click on File then Minimize Scheduler**

You have now scheduled your computer to automatically run an automatic reconstruct.