

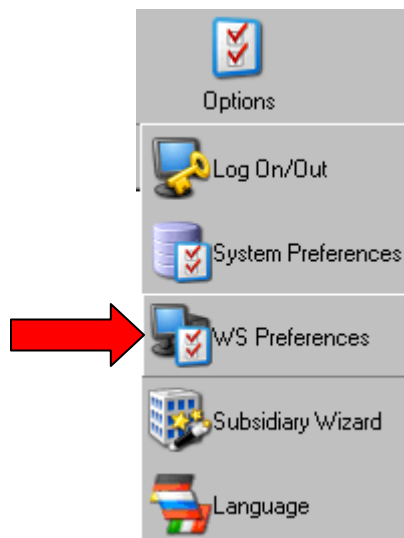


## Set your main Rpro screen to be your homepage January 2013 Retail Pro v 9

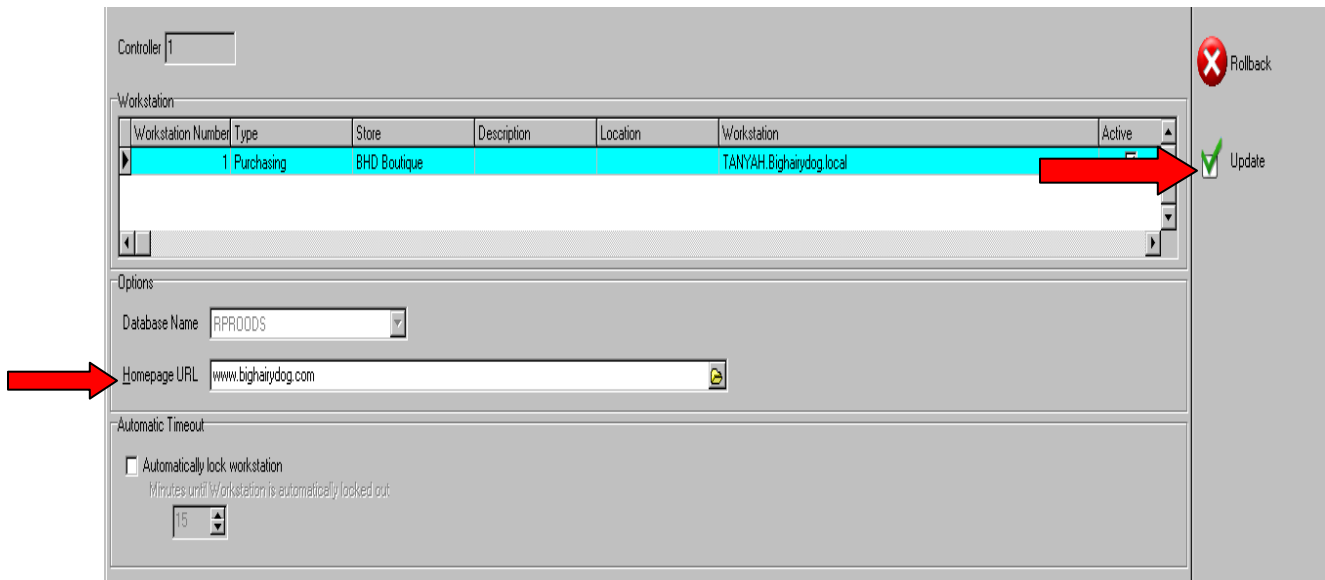
---

The main menu background of Retail Pro v9 is a web browser and can be set to your store's web page instead of the Retail Pro graphic. It is very easy to adjust and will be addressed in this Feature of the Month.

1. This setting must be adjusted on each individual workstation. To make the change, start at the main menu of Retail Pro and choose 'Options' from the top bar and then 'WS Preferences' from the drop down list.  
(Note: you will need to be logged in as a user with the access rights to WS Preferences).



2. Once you are logged in with the proper access, look for the line that reads 'Homepage URL' and change it to the address of your website.



3. Once your website address is in the Homepage URL, click on 'Update' box on the side menu. Your website will now show on the main screen of Retail Pro.