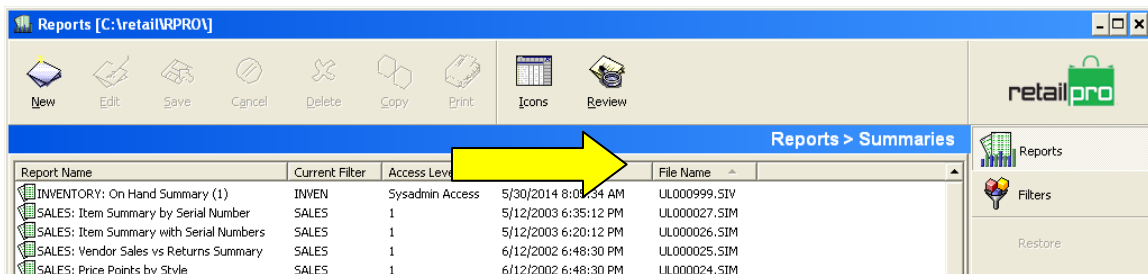




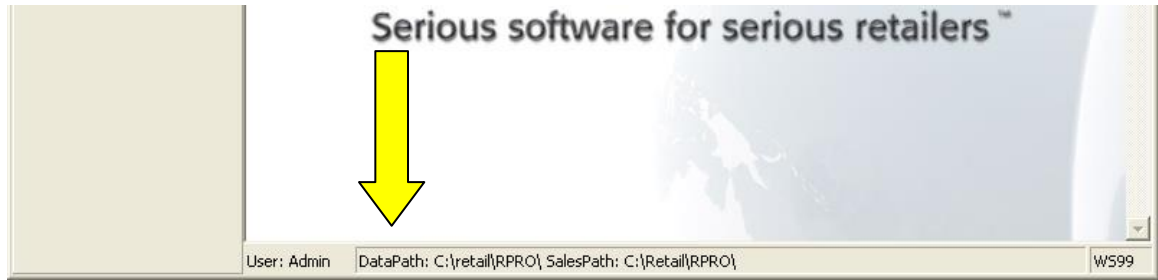
## Copying report to remote stations July, 2014 Retail Pro v8

All of the reports that you run in Rpro v8 have the ability to be copied to your remote location. Exporting and Importing report can easily be done with a couple of steps.

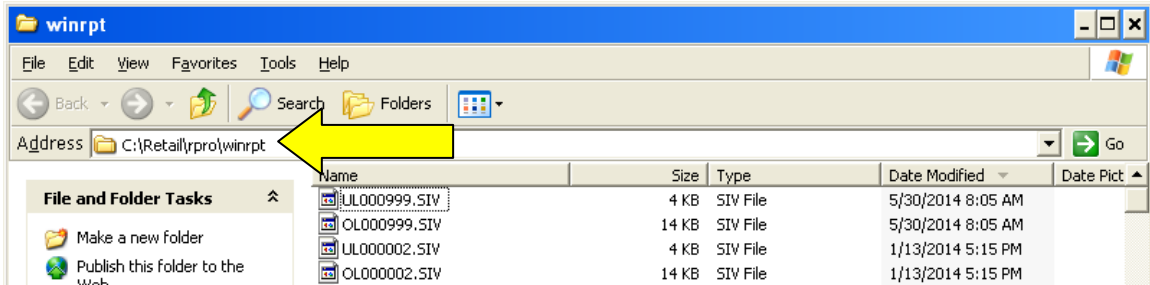
1. Once you have reports open your screen, you will notice File Name Header along the top of the Report list. Make note of the file name of the report that is to be moved to the remote.



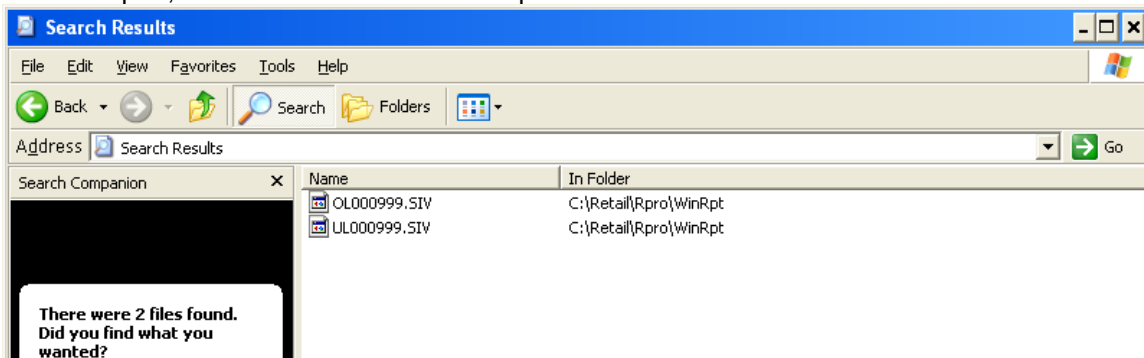
2. Open your copy of Retail Pro and Make a note of the Data Path at the bottom of the home screen.



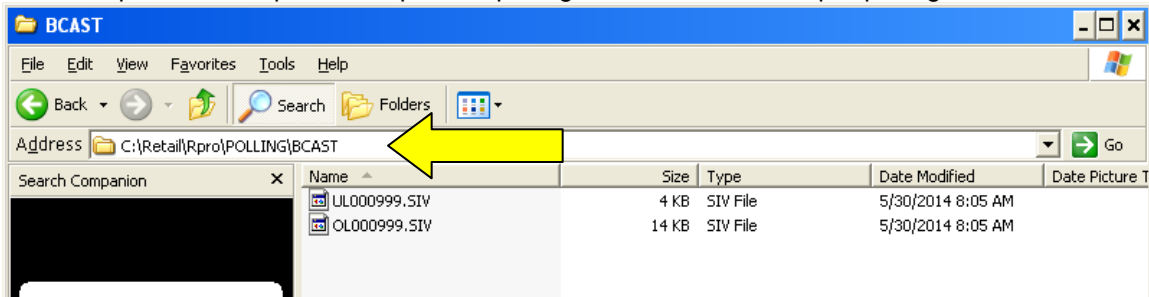
3. Open Explorer window and path to the Retail Pro Data Path, ie C:\Retail\rpro\, Continue to the **WINRPT** Folder.



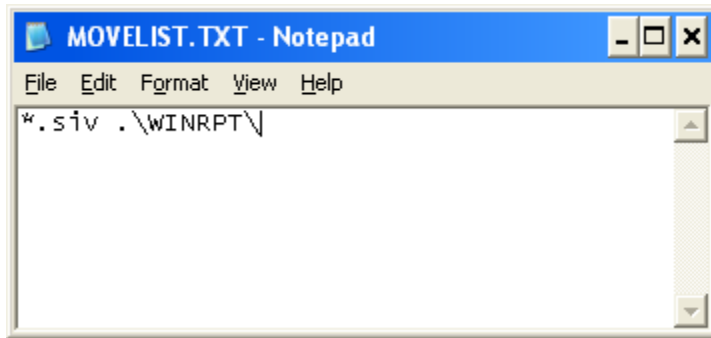
4. Search in the **WINRPT** for the report, ie **\*999.siv**, there will be multiple files for the same report, all of them will need to be copied.



5. Open the data path and open the polling folder. IE. C:\retail\rpro\polling\bacst



6. Create a Text file called "**Movelist.txt**" inside of the **BCAST** folder. Edit the Movelist.txt file and add the following lines **\*.siv .WINRPT**. Save and close all open windows.



7. Open Polling and process out. After Processing out Have the remote store perform a Quick poll. the custom report will now be in there list of reports.

**Helpful Hint:** If there are any custom filters, they too will also need to be copied from the WINFLT folder and added to the Movelist.txt