



## FEATURE OF THE MONTH JULY, 2013

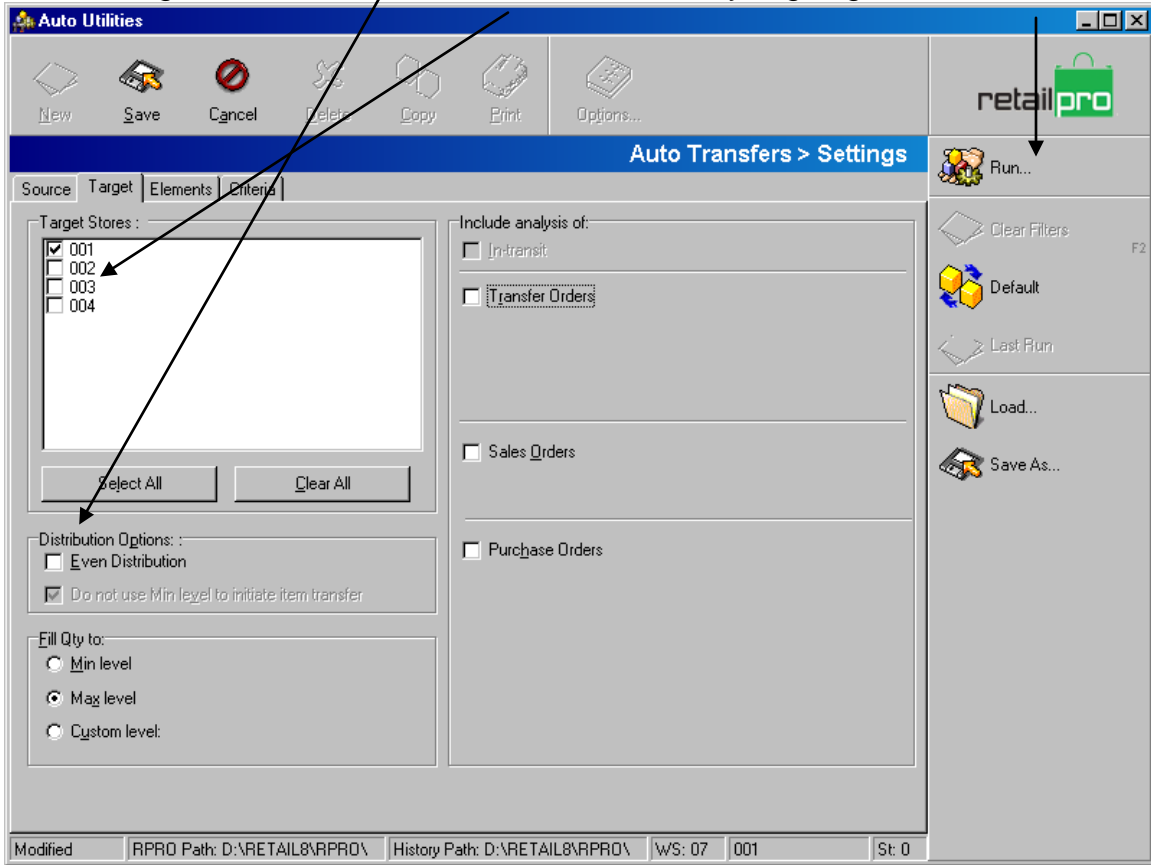
### V8 Merge Inventories with Auto Transfers

If you have 1 inventory you are moving en masse to another location, you don't need to do manual transfers for each item to the store, you can use auto transfers to merge the inventories together all at once. Here is how to do it.

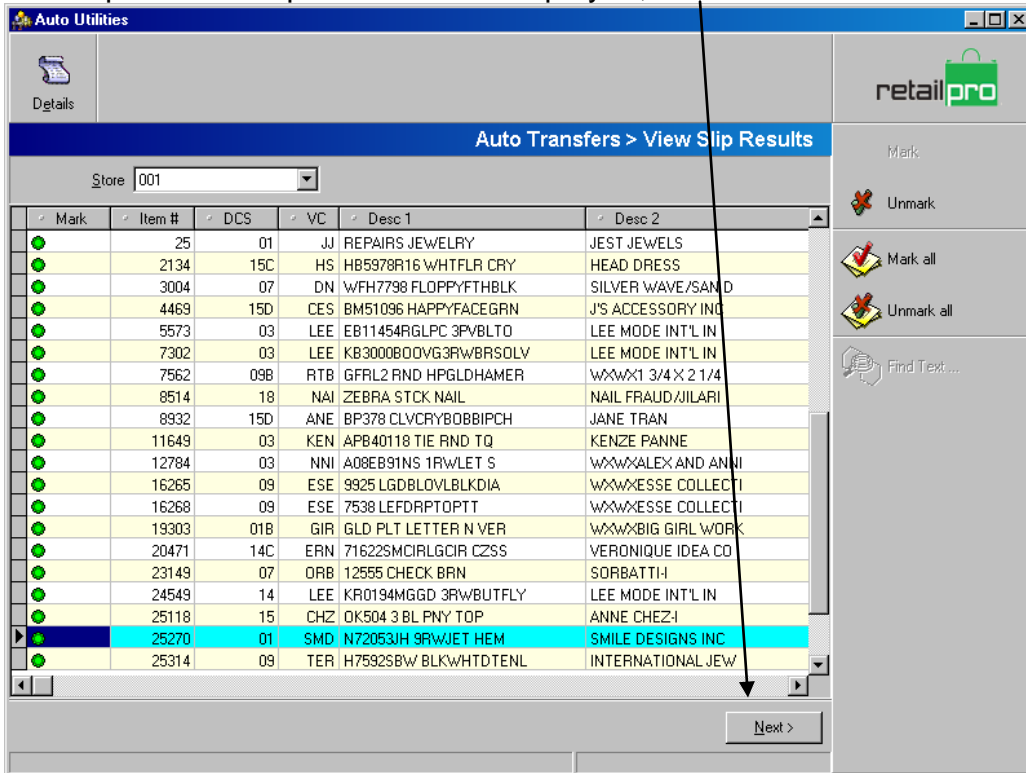
In Retail Pro V8 Go to Transfers>Auto Transfers



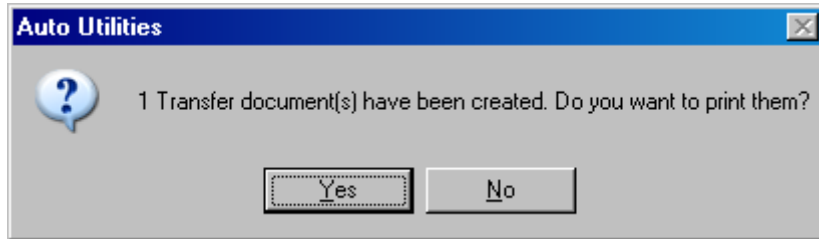
Set the Source Store and Set Force Distribution to 100%  
 On the Target Tab, Check off the store the inventory is going to then click "Run"



After it processes a preview will be displayed, Click next to Create the Slips



Once it processes your slips will be created and you can choose whether to print them or not.



All the positive quantities from the source store are now transferred to the destination store.

NOTE: This will not move negative quantities, only positive so to zero out the source store you will need to do a zero out Physical Inventory (Or manually transfer items from the destination back to the source to make up the difference)