

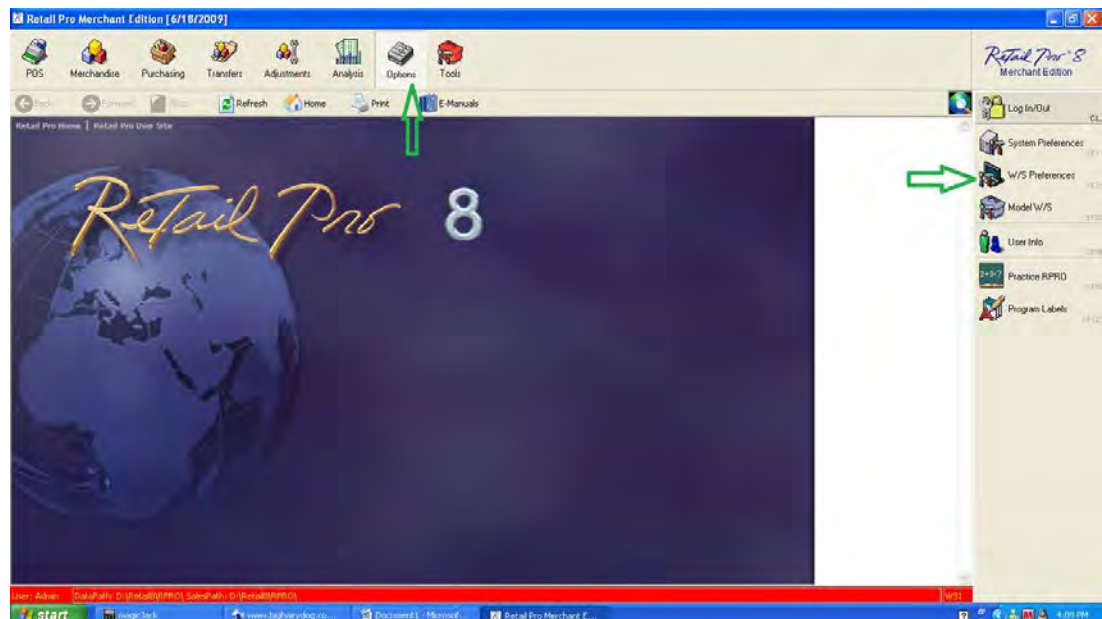


June, 2013

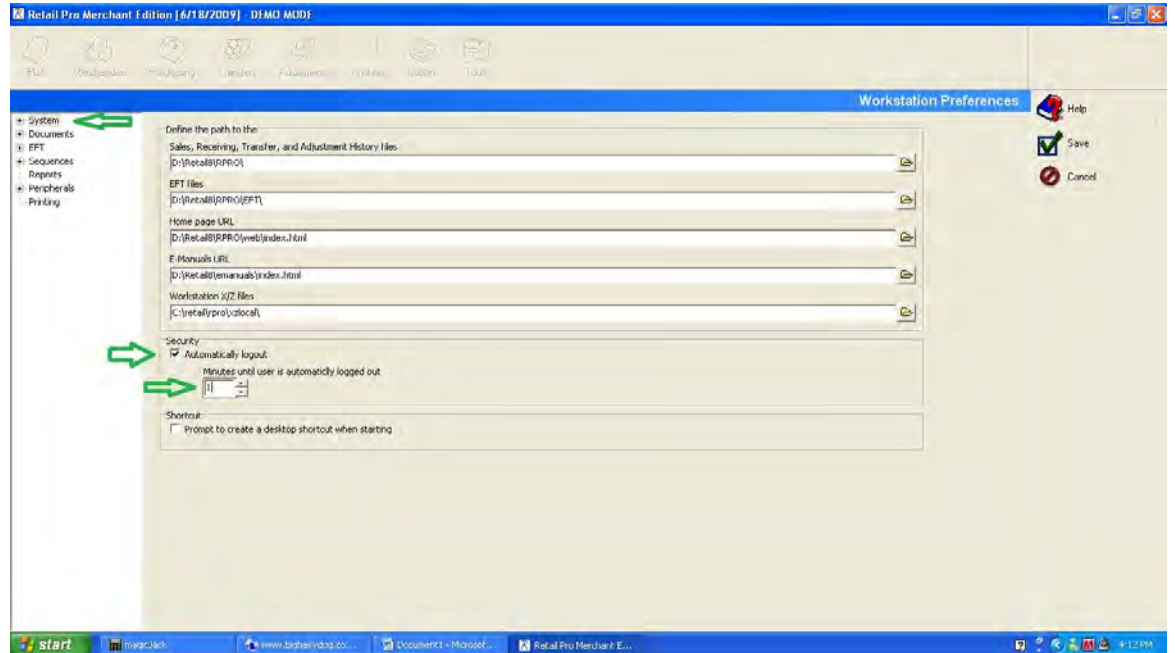
Auto Lockout Security Feature – Version 8

Ever worried to leave the register to go to the office in the back for fear someone is going to walk in and click the “Open Drawer” button and get away with all your hard earned cash. There is a feature that will solve that problem. Below are the steps to activate this feature:

1. From the main menu, click on “**Options**” and then on the side menu, click “**W/S Preferences**”.



- At the bottom of the next screen, you will see “Security”, and in that section of the screen, a check-box called “Automatically logout”, as well as a number field labeled “Minutes until user is automatically logged out”. Here you can specify from 1 minute to 999 minutes. Remember to check the box to enable the feature.



3. Once you have specified the time for the system to log you out, click save and you will be returned to the main menu. Now, if there has been no activity for the amount of time you specified, the login screen will appear.

