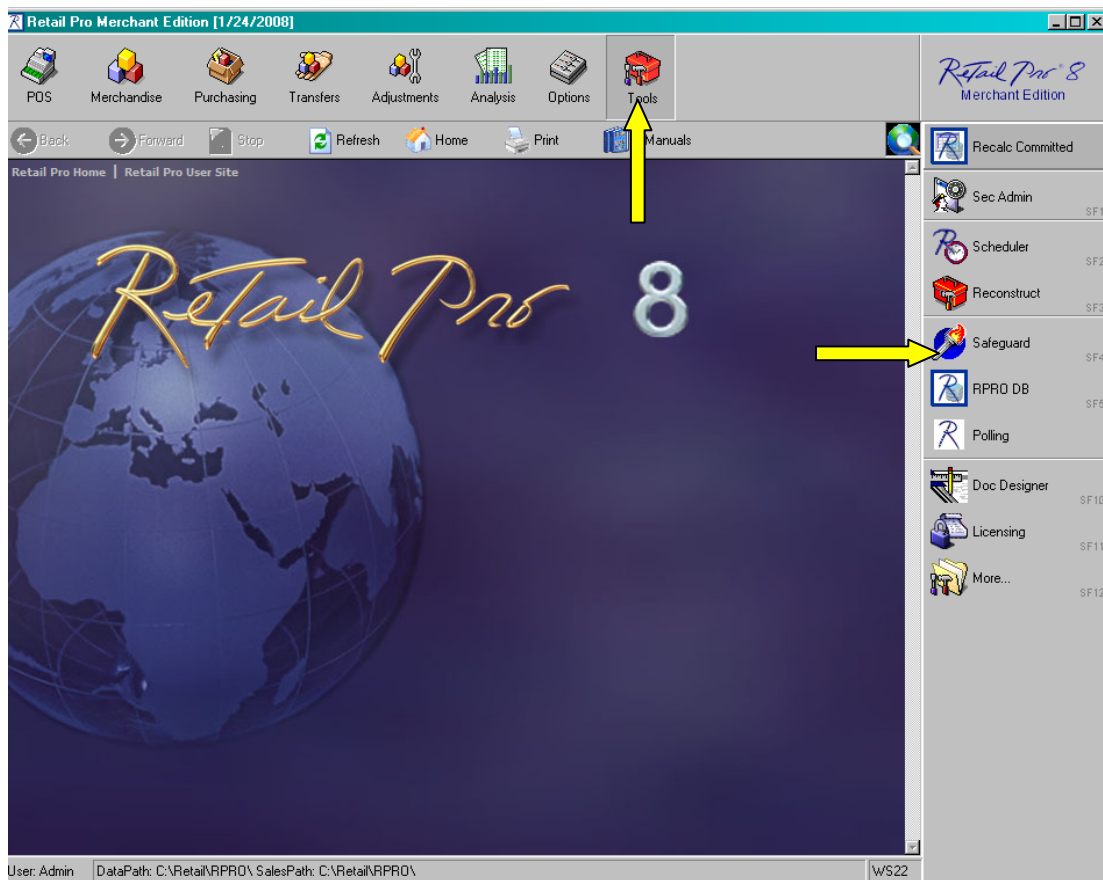


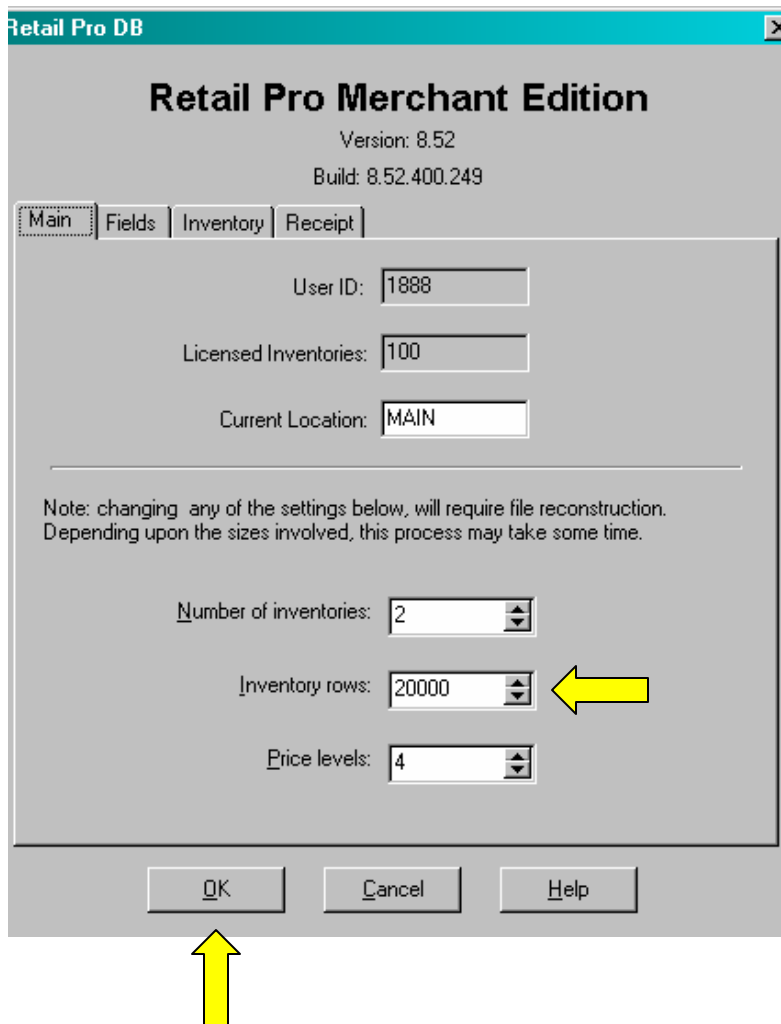


How to add Inventory Rows

1. Click on Tools from top menu bar then click on RPRODB from the side menu.



2. On the Main tab in the lower half you will see Inventory Rows, simply put in the amount of rows that you need, then click on ok.



Retail Pro DB [X]

Retail Pro Merchant Edition

Version: 8.52
Build: 8.52.400.249

Main Fields Inventory Receipt

User ID: 1888

Licensed Inventories: 100

Current Location: MAIN

Note: changing any of the settings below, will require file reconstruction. Depending upon the sizes involved, this process may take some time.

Number of inventories: 2

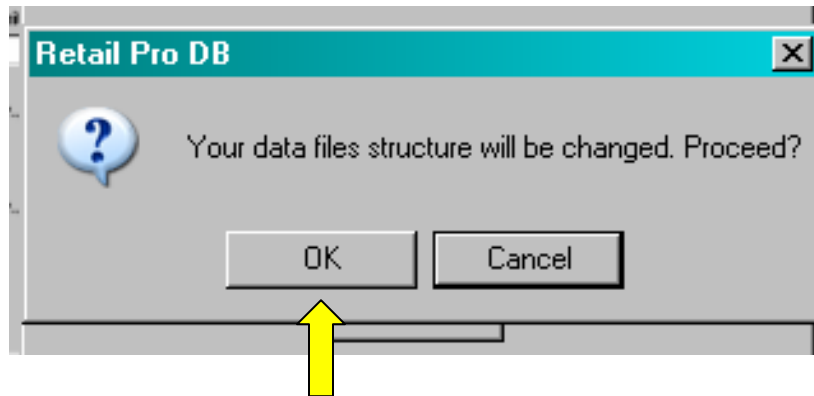
Inventory rows: 20000

Price levels: 4

OK Cancel Help

A yellow arrow points to the 'Inventory rows' field, and another yellow arrow points to the 'OK' button.

3. When this window appears click on ok



4. After it processes the files click on close and you are done.

