



RP8 Series Max Discounts

May 2016

<https://www.youtube.com/watch?v=R5DVYDPpemU>

With Retail Pro you have the option to set a maximum discount amount for selected Items.

Scenario:

You have certain items that you never want to discount more than 50%.
Regardless of user rights, the item cannot be discounted more than 50%.

Solution:

Use the Max Discount field value in Inventory.

Procedure:

- 1- Start by going into Item Inventory View.
- 2- First time around, you may need to add the Max Discount Field.
- 3- Select the item you wish to change then edit the Max Discount % field with the desired value. *In this demo we are using a Max Discount of 50%.
- 4- By selling the selected item and applying a discount that is greater than 50%, Rpro will give a warning and then set the discount back down to the specified Max Discount of 50%

Result:

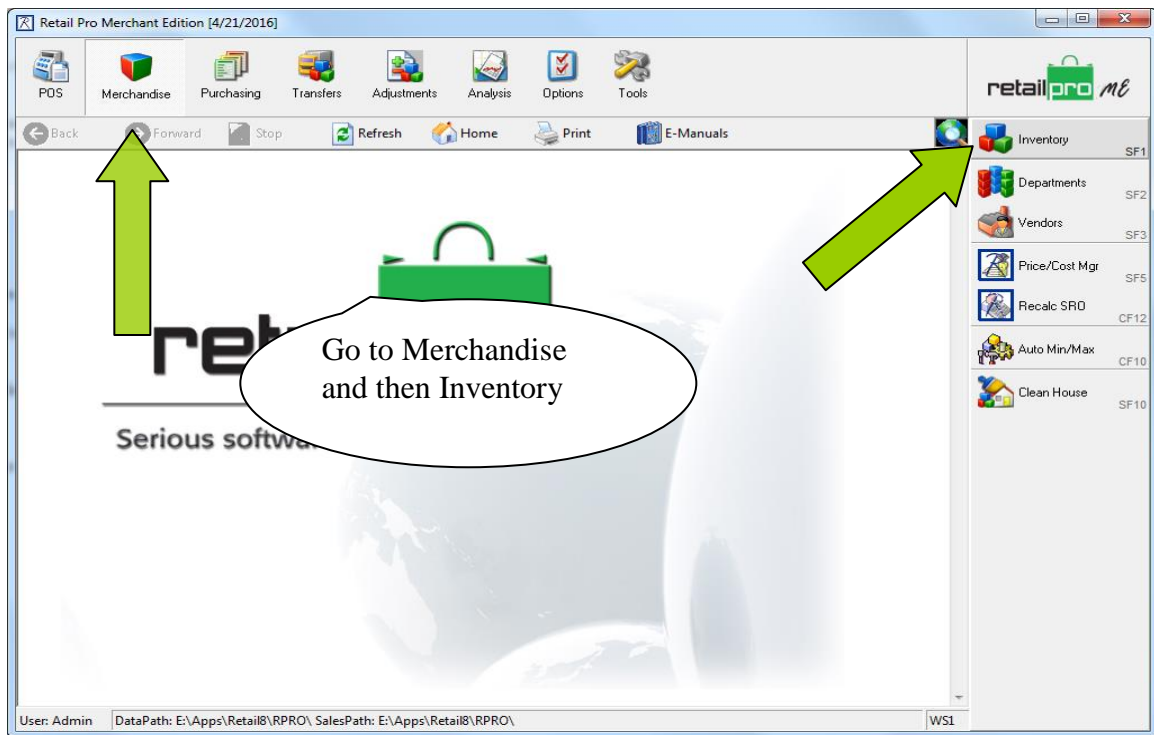
Now sell the item on a new receipt. Try entering a discount greater than 50% - system will warn disc is greater than allowed. Any discount below 50% will be accepted.

Important Note:

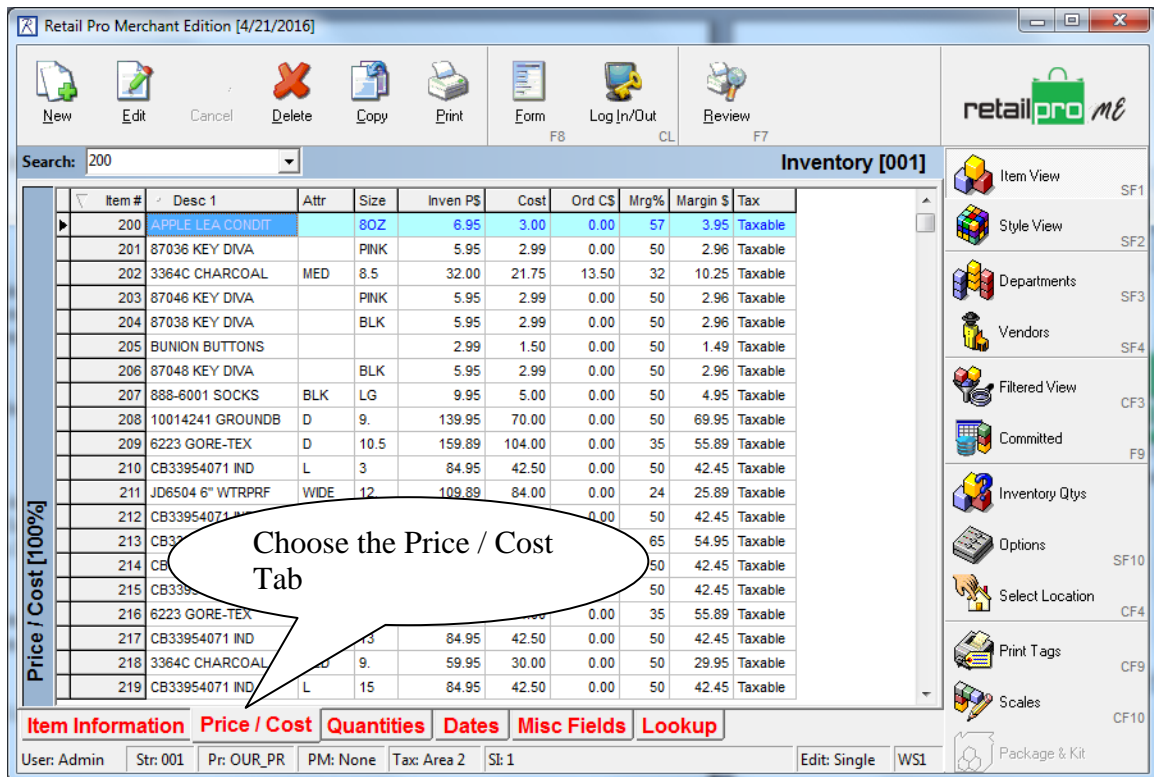
In Retailpro V8 only, if you are logged in as user Sysadmin the feature does not apply.

On the following pages we have included the necessary step via screen shots.

1- Start by going into Item Inventory View.



2- First time around, you may need to add the Max Discount Field.



Now we add the Max Discount Field.

Right Click on Column Header. Choose Interface then Page Manager.

Item#	Desc 1	Attr	Size	Invnt PS	Cost
200			9.5	2.99	
201	87036 KEY DNA	PRK	5.95	2.99	
202	3364C CHARCGAL	MED	8.5	32.00	21.75
203	87048 KEY DNA	PRK	5.95	2.99	
204	87038 KEY DNA	BLK	5.95	2.99	
205	BUNION BUTTRES		2.99	1.50	
206	87048 KEY DNA	BLK	5.95	2.99	0.00
207	885-8001 SOCKS	BLK	LO	9.95	5.00
208	10014241 GROUNDE	D	9	139.95	70.00
209	8223 GORE-TEX	D	10.5	159.89	104.00
210	CB3394071 IND	L	3	84.95	42.50
211	06554 4" WTRPROF	WDEE	12	109.89	84.00
212	CB3394071 IND	L	5	84.95	42.50
213	CB3394071 IND	L	7	84.95	30.00
214	CB3394071 IND	L	9	84.95	42.50
215	CB3394071 IND	L	11	84.95	42.50
216	8223 GORE-TEX	D	11	159.89	104.00
217	CB3394071 IND	XL	5	84.95	42.50
218	CB3394071 IND	L	13	84.95	42.50
219	3364C CHARCGAL	MED	9	59.95	30.00
219	CB3394071 IND	L	15	84.95	42.50
220	8223 GORE-TEX	D	11.5	159.89	98.00
221	8223 GORE-TEX	D	12	159.89	104.00
222	CB3394071 IND	L	5	84.95	42.50
223	8223 GORE-TEX	D	13	159.89	98.00
224	8223 GORE-TEX	D	14	159.89	98.00
225	8223 GORE-TEX	EE	8.5	159.89	98.00
226	8223 GORE-TEX	EE	9	159.89	98.00
227	38-82842-721 HE	SAM	9.95	5.00	0.00
228	38-82842-721 HE	M/L	9.95	4.99	0.00
229	3364C CHARCGAL	MED	9.5	59.95	30.00
230	3364C CHARCGAL	MED	10	59.95	30.00
231	3364C CHARCGAL	MED	10.5	59.95	30.00
232	3364C CHARCGAL	MED	11	59.95	30.00
233	3364C CHARCGAL	MED	11.5	59.95	30.00
234	3364C CHARCGAL	MED	12	59.95	30.00
235	3364C CHARCGAL	MED	12.5	59.95	30.00
236	3364C CHARCGAL	MED	13	59.95	30.00
237	3364C CHARCGAL	MED	13.5	59.95	30.00
238	3364C CHARCGAL	MED	1	59.95	30.00
239	3364C CHARCGAL	MED	1.5	59.95	30.00
240	3364C CHARCGAL	MED	2	59.95	30.00
241	3364C CHARCGAL	MED	2.5	59.95	30.00
242	2972201 NECKLACE		30.00	14.00	0.00

A new pop up will show up.

On this box scroll down until you see Max Discount % and just double click on it. Then click apply

Page Manager [Default]

Pages Font: Arial, 12

Grid F

Show Tabs
 Show Caption
 Show Shortcuts

Available Pages

- Item Information
- Price / Cost
- Quantities
- Dates
- Misc Fields
- Lookup

Page Design

- FOCS Typ
- Max Discount %
- Vendor List Cost
- Trade Discount %
- [Cost Code]
- Kit Item Type
- Non-Inventory
- Committed
- [Last Edit]
- [Sale Disc %]
- [Sale Disc \$]

Apply Cancel

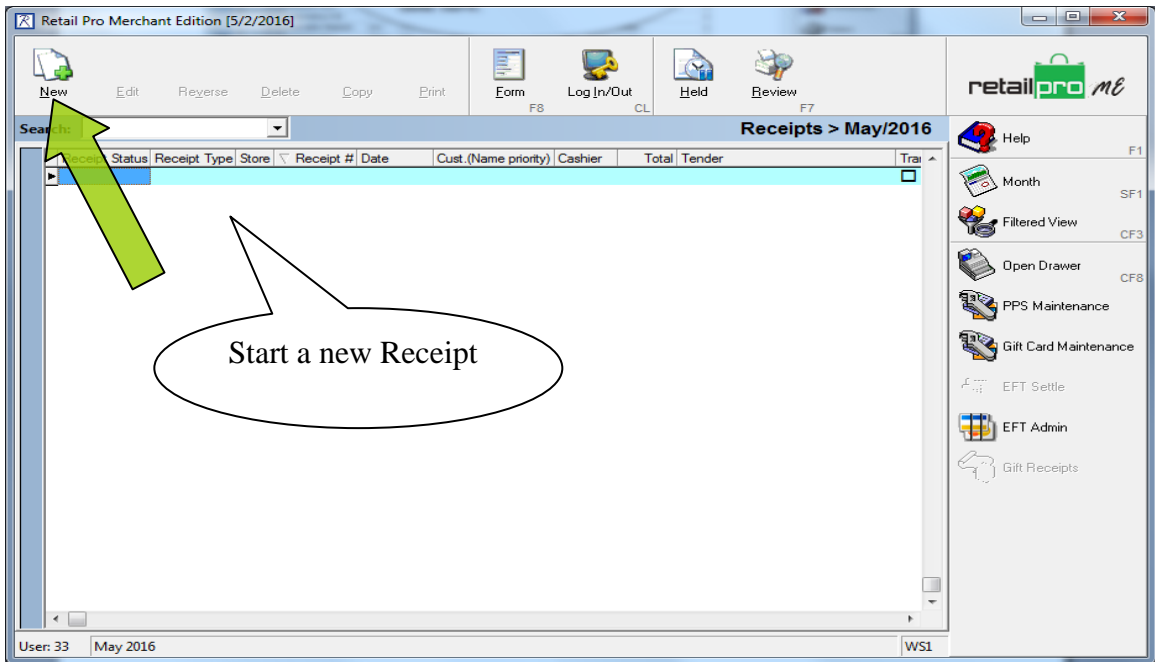
3- Select the item you wish to change then edit the Max Discount % field with the desired value.
 *In this demo we are using a Max Discount of 50%.

Once you have the desired Item, select Edit and then enter the desired % amount then Save.

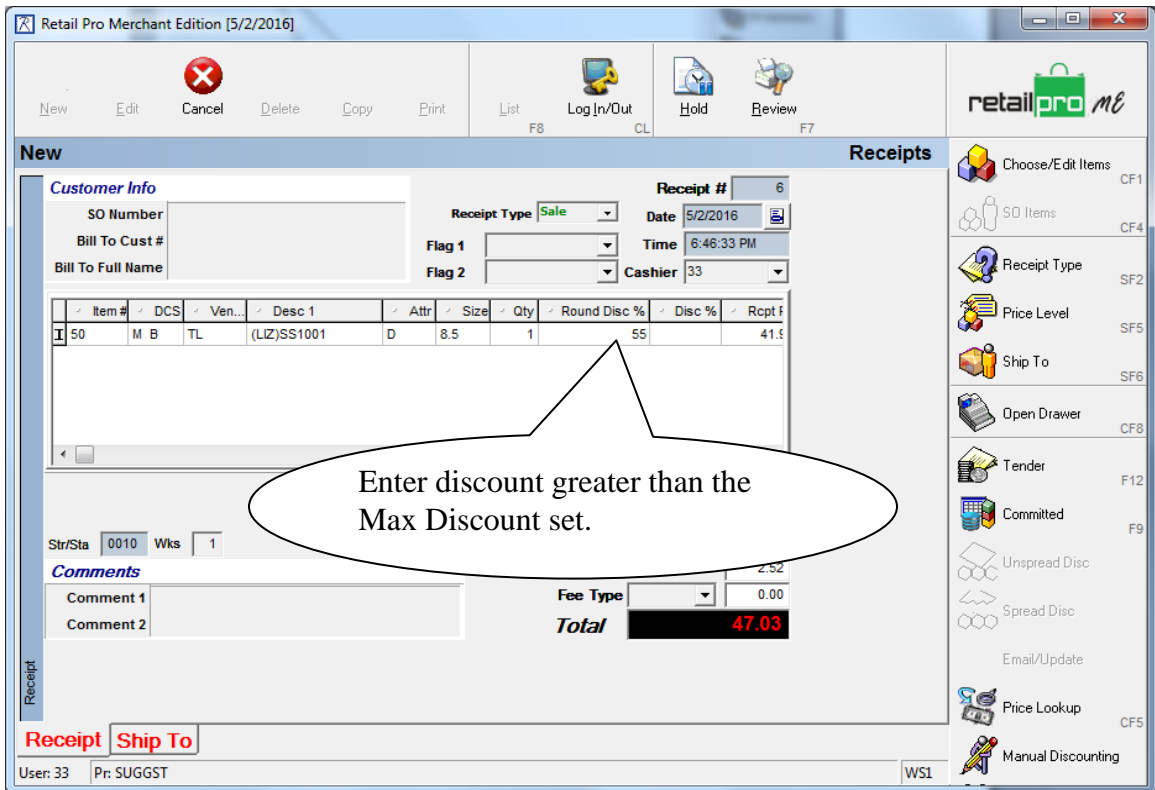
Item#	Desc 1	Attr	Size	Inven PS	Cost	Ord CS	Mrg%	Margin \$	Tax	Max Discount %
1000	SS5309 BLK&GRY	33	15/	34.95	17.25	0.00	51	17.70	Taxable	50.00
1001	SS5309 BLK&GRY	35	16/	34.95	17.25	0.00	51	17.70	Taxable	0
1002	SS5309 BLK&GRY	35	17.	34.95	17.25	0.00	51	17.70	Taxable	0
1003	20-8830-601 BR	D	9.	169.89	125.00	0.00	26			0
1004	SS5309 BLK&GRY	36	18.							0
1005	1-016-325 BLK	GBR								0
1006	4325 BRN TREMOR									0
1007	4325 BRN TREMOR									0
1008	4325 BRN TREMOR									0
1009	4325 BRN TREMOR									0
1010	350-565-222									0
1011	30S5004 TEAL									0
1012	22254 BOLO TIE									0
1013	4325 BRN TREMOR	EV								0
1014	30S5004 TEAL	TEAL	MD	49.95	25.00	0.00	50	24.95	Taxable	0
1015	350-565-2223 BLU	BLUE	MD	49.95	25.00	0.00	50	24.95	Taxable	0
1016	30S5004 TEAL	TEAL	LG	41.95	21.00	0.00	50	20.95	Taxable	0
1017	350-565-2223 BLU	BLUE	LG	49.95	25.00	0.00	50	24.95	Taxable	0
1018	30S5004 TEAL	TEAL	XL	41.95	21.00	0.00	50	20.95	Taxable	0
1019	30S5000 BLACK	BLK	SM	41.95	21.00	0.00	50	20.95	Taxable	0
1020	30S5000 BLACK	BLK	MD	41.95	21.00	0.00	50	20.95	Taxable	0
1021	91231 COW BLK	D	13.	109.89	75.00	0.00	32	34.89	Taxable	0

Now we can test the results. The Item# in this demo is 1000.

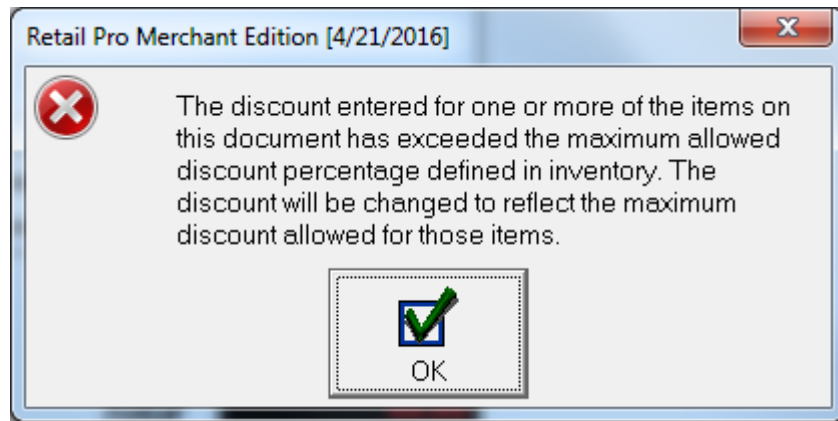
Begin by making a new receipt.



4- By selling the selected item and applying a discount that is greater than 50%, Rpro will give a warning and then set the discount back down to the specified Max Discount of 50%



Immediately, you will see the following warning stating that discount is greater than allowed.



If you click OK, Retailpro will automatically reduce the Discount amount to 50% which is the Max amount. You can then proceed to add more items and tender the sale.

And that is all there is to it!