

# A RETAILER'S BEST FRIEND.



## Using DCS Margins

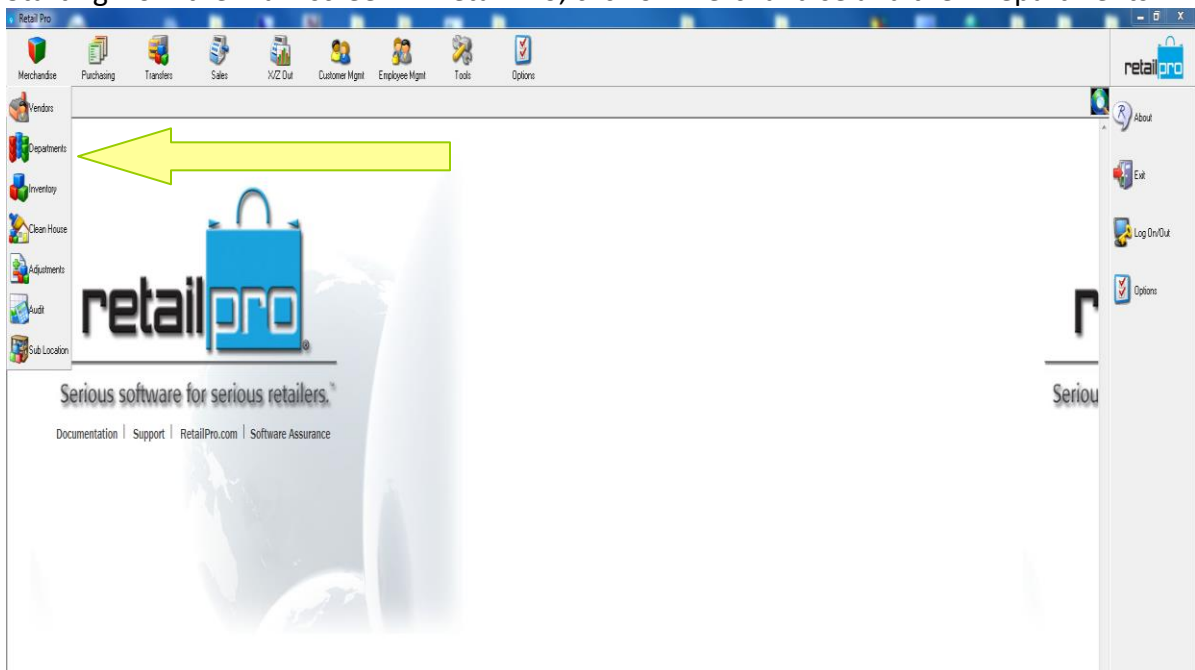
*Version 9*

[https://youtu.be/9\\_xmac\\_4mZs](https://youtu.be/9_xmac_4mZs)

With Rpro you can assign a default margin percentage that will be applied to all items created and assigned to a specific department (DCS). This can easily be done both in RetailPro V8 and V9. This feature will make it easier to set a price when many similar items are being added to inventory. Can be done while other workstations are in use. You can either assign a margin to an existing DCS or to a new DCS. **Important to note:**

This will only apply to new items being assigned to that department.

1. Starting from the main screen in Retail Pro, click on Merchandise and then Departments.



- Click on Edit. We will now edit an existing DCS and apply a 50% margin to it. Highlight selected DCS and choose Edit.

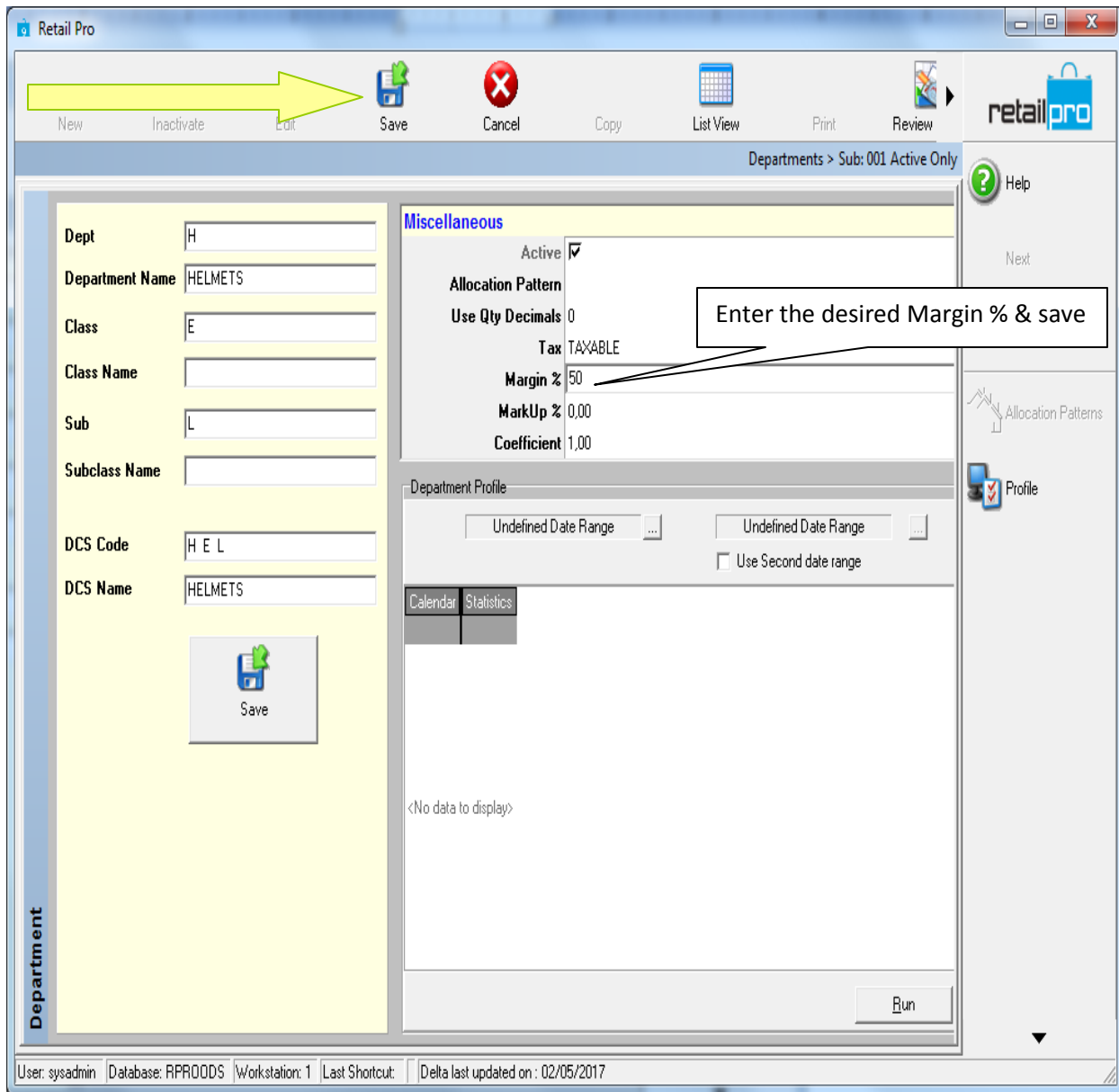
Subsidiary: 001

Dept:      Class:      Sub:      Department

DCS Name	DCS	Dept	Class	Sub	Mrg%	MkUp%	Coef	Alloc Pattern	Tax	Use Qty Decimals
PATIO FURNITURE UMBI	P F U	P	F	U	0.00	0.00	1.00		TAXABLE	0
PATIO FURNITURE CUSH	P F N	P	F	N	0.00	0.00	1.00		TAXABLE	0
PATIO FURNITURE ACCSP	P F A	P	F	A	0.00	0.00	1.00		TAXABLE	0
RENTAL RETAIL HELME	R R H	R	R	H	0.00	0.00	1.00		TAXABLE	0
RENTAL RETAIL POLE	R R P	R	R	P	0.00	0.00	1.00		TAXABLE	0
PATIO FUNITURE GRILL	P F R	P	F	R	0.00	0.00	1.00		TAXABLE	0
ACCESSORY MISC GOG(A	M G	A	M	G	0.00	0.00	1.00		TAXABLE	0
DEMO RETAIL SNOWED	R B	D	R	B	0.00	0.00	1.00		TAXABLE	0
▶ HELMETS	H E L	H	E	L	0.00	0.00	1.00		TAXABLE	0
DEMO SNOWBOARD RE	R B	D	B	R	0.00	0.00	1.00		TAXABLE	0
SKI PASS TICKETS	Z P A	Z	P	A	0.00	0.00	1.00		TAXABLE	0
DEMO RETAIL CYCLE	D R C	D	R	C	0.00	0.00	1.00		TAXABLE	0
PADDLE BOARDING S.U.	P A D	P	A	D	0.00	0.00	1.00		TAXABLE	0
DEMO RETAIL PADDLE	R P	D	R	P	0.00	0.00	1.00		TAXABLE	0
GLOVES KIDS GLOVES	G K G	G	K	G	0.00	0.00	1.00		TAXABLE	0
GLOVES KIDS MITTEN	G K M	G	K	M	0.00	0.00	1.00		TAXABLE	0
GLOVES MENS GLOVE	G M G	G	M	G	0.00	0.00	1.00		TAXABLE	0
GLOVES MENS GLOVE	G M M	G	M	M	0.00	0.00	1.00		TAXABLE	0
GLOVES WOMENS GLO	G W G	G	W	G	0.00	0.00	1.00		TAXABLE	0
GLOVES WOMENS MIT	G W M	G	W	M	0.00	0.00	1.00		TAXABLE	0
MENS SKI MIDLAYEF	M S M	M	S	M	0.00	0.00	1.00		TAXABLE	0
MENS SKI BASELAYE	M S B	M	S	B	0.00	0.00	1.00		TAXABLE	0

User: sysadmin Database: RPROODS Workstation: 1 Last Shortcut: Tab Delta last updated on : 02/05/2017

3 - Enter the desired Margin % click on Save.



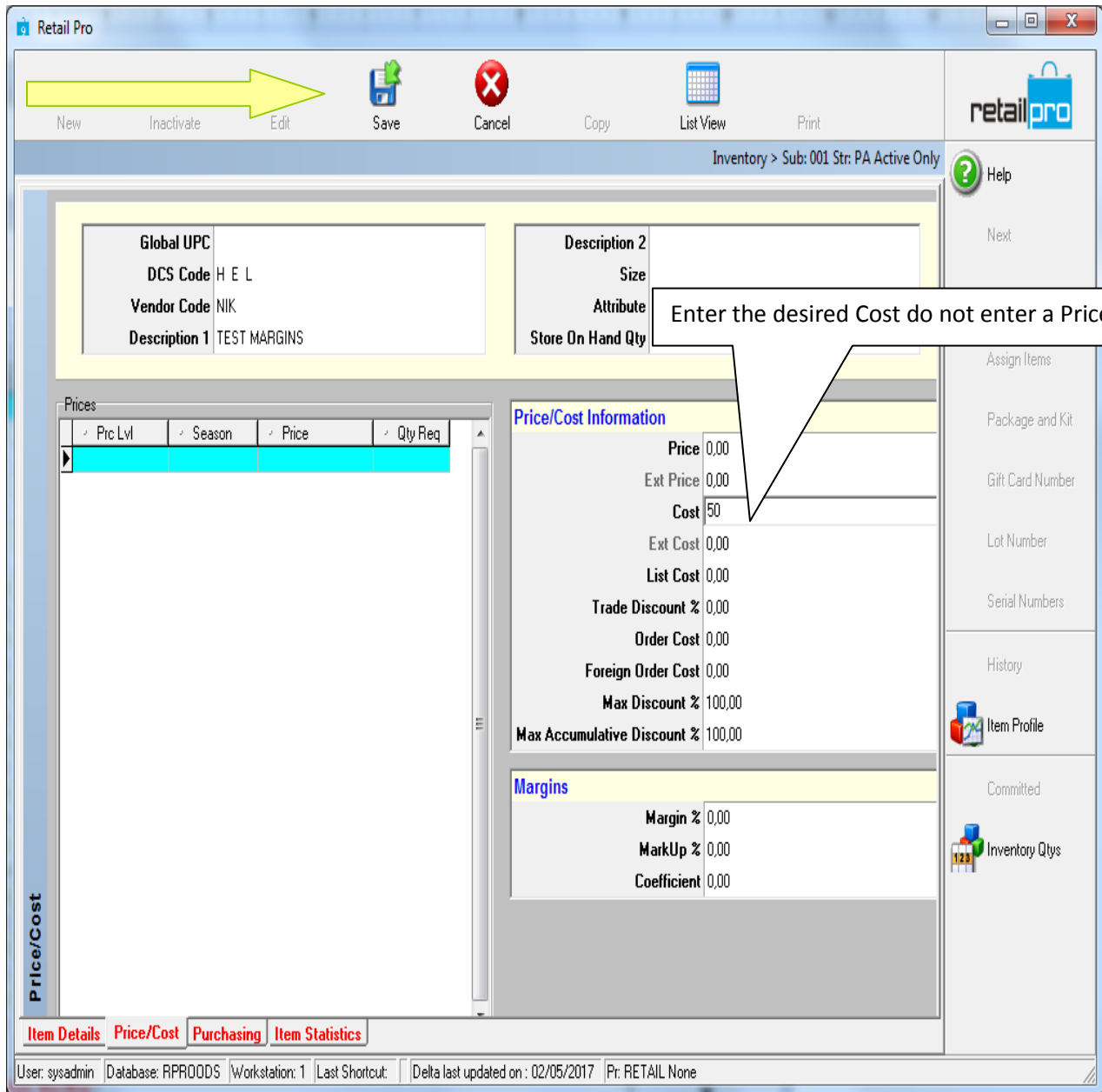
We will now test the feature. Go to your Inventory List and select New.

4. Click on New

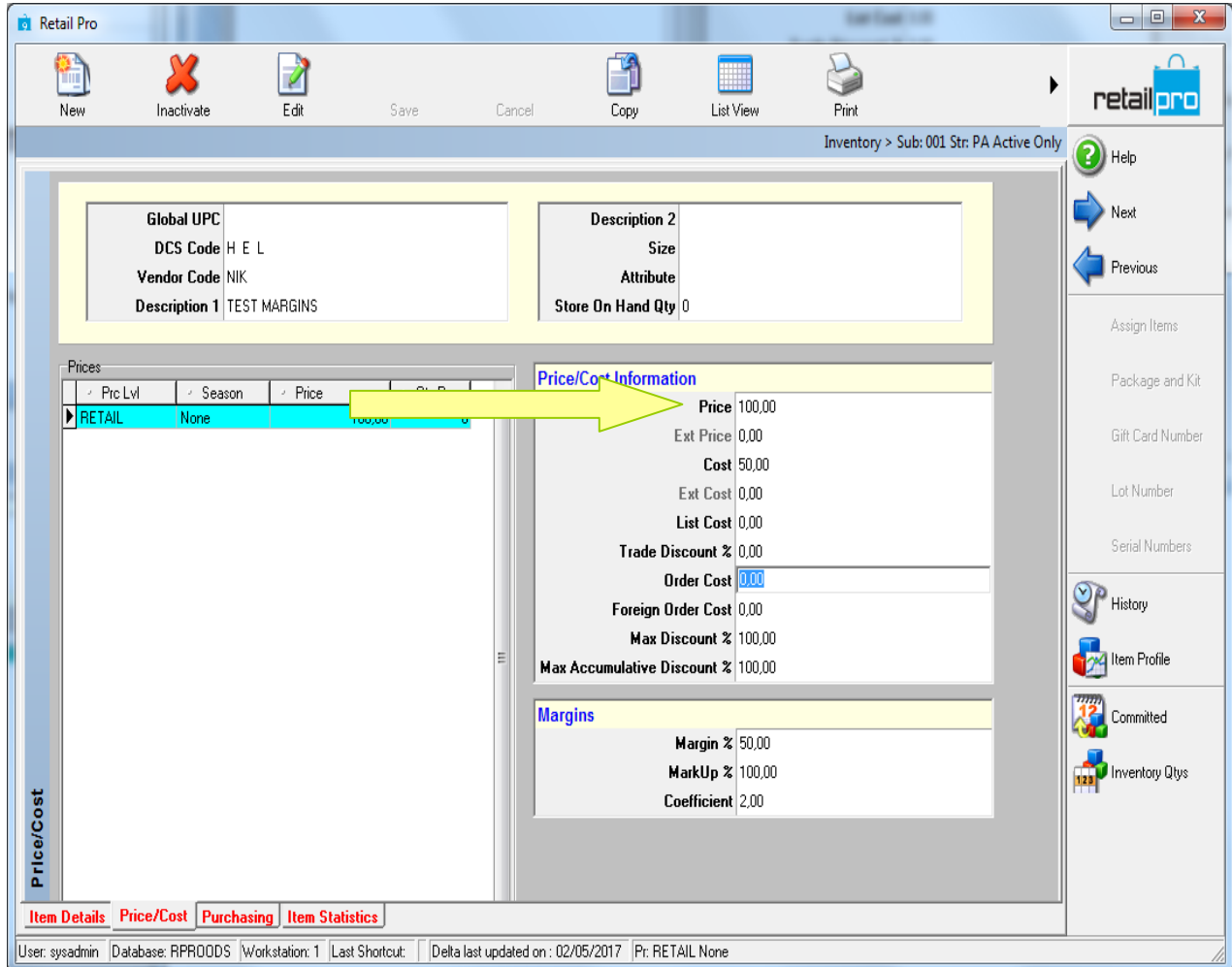
The screenshot shows the Retail Pro application window. At the top, there is a menu bar with icons for 'New', 'Inactivate', 'Edit', 'Save', 'Cancel', 'Copy', 'Form View', and 'Print'. A yellow arrow points to the 'New' button. Below the menu bar, there is a 'Subsidiary' dropdown menu and a header area with fields for 'DCS Code', 'Vendor Code', 'Description 1', and 'Global UPC'. The main area contains an 'Inventory' table with columns for ALU, Global UPC, DCS, Vend Code, Desc1, Desc2, Size, Attr, Cost, and Price. The table lists various items, including 'DAFF' and 'RIDER III'. At the bottom, there are tabs for 'Item Details', 'Miscellaneous', 'Price Manager', and 'Auto Min/Max'. The status bar at the very bottom shows 'User: sysadmin Database: RPRODDS Workstation: 1 Last Shortcut: Delta last updated on : 02/05/2017 Pr: RETAIL None'.

ALU	Global UPC	DCS	Vend Code	Desc1	Desc2	Size	Attr	Cost	Price
128		M S J	MFO	MF14W0504	DAFF	52	600	350.17	0.00
129		M S J	MFO	MF14W0504	DAFF	54	600	350.17	0.00
130		M S J	MFO	MF14W0504	DAFF	56	600	350.17	0.00
131		M S J	MFO	MF14W0504	DAFF	58	600	350.17	0.00
132		M S J	MFO	MF14W0530	SWIFT	50	680	350.17	849.00
133		M S J	MFO	MF14W0530	SWIFT	52	680	350.17	849.00
134		M S J	MFO	MF14W0530	SWIFT	54	680	350.17	849.00
135		M S U	MFO	MF14W2502	RIDER III	48	0	226.98	549.00
136		M S U	MFO	MF14W2502	RIDER III	50	0	226.98	549.00
137		M S U	MFO	MF14W2502	RIDER III	52	0	226.98	549.00
138		M S U	MFO	MF14W2502	RIDER III	54	0	226.98	549.00
139		M S U	MFO	MF14W2502	RIDER III	48	100	226.98	549.00
140		M S U	MFO	MF14W2502	RIDER III	50	100	175.03	549.00
141		M S U	MFO	MF14W2502	RIDER III	52	100	140.40	0.00
142		M S U	MFO	MF14W2502	RIDER III	54	100	140.40	0.00
143		M S U	MFO	MF14W2502	RIDER III	48	200	126.00	0.00
144		M S U	MFO	MF14W2502	RIDER III	50	200	126.00	0.00
145		M S U	MFO	MF14W2502	RIDER III	52	200	226.98	549.00
146		M C W	GEA	AM800	16 GAUGE CREW L		M/G	180.00	360.00
147		M S U	MFO	MF14W2502	RIDER III	54	200	226.98	549.00
148		M S U	MFO	MF14W2502	RIDER III	48	230	226.98	549.00
149		M S U	MFO	MF14W2502	RIDER III	50	230	226.98	549.00
150		M S U	MFO	MF14W2502	RIDER III	52	230	226.98	549.00
151		M S U	MFO	MF14W2502	RIDER III	54	230	226.98	549.00
152		M S U	MFO	MF14W2502	RIDER III	48	300	226.98	549.00

5. Enter a new item using the new DCS along with other fields as usual. Then click on the Cost field and enter the desired Cost then save.



6 - Now note that the item Price has been assigned automatically as \$100.00



AND THAT IS ALL YOU NEED TO DO.