

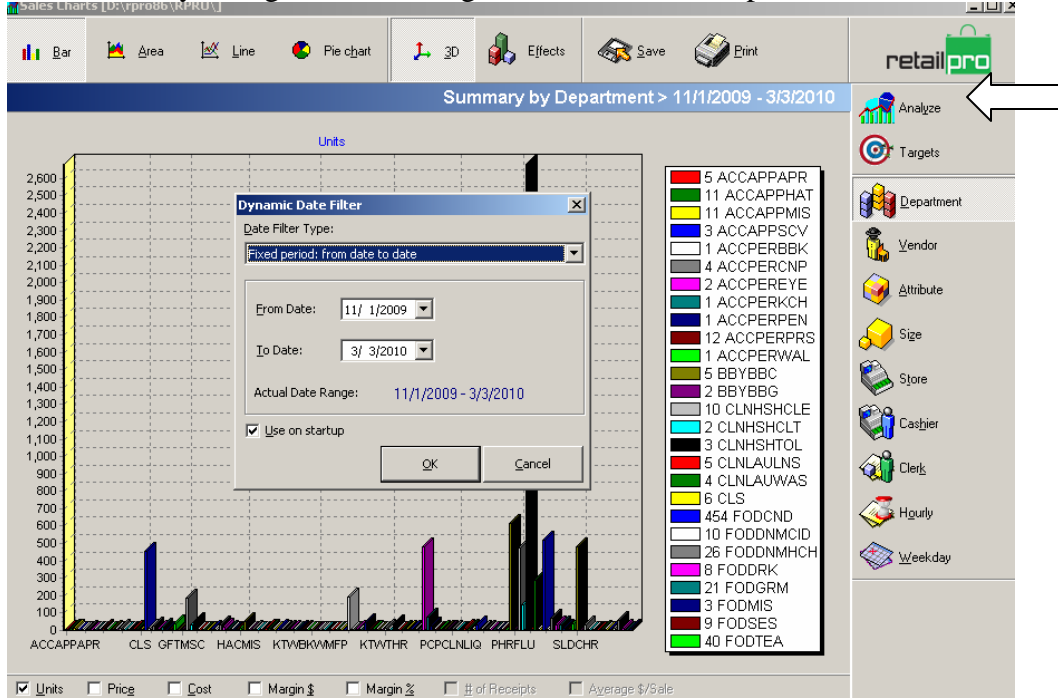


Sales Charts March, 2010

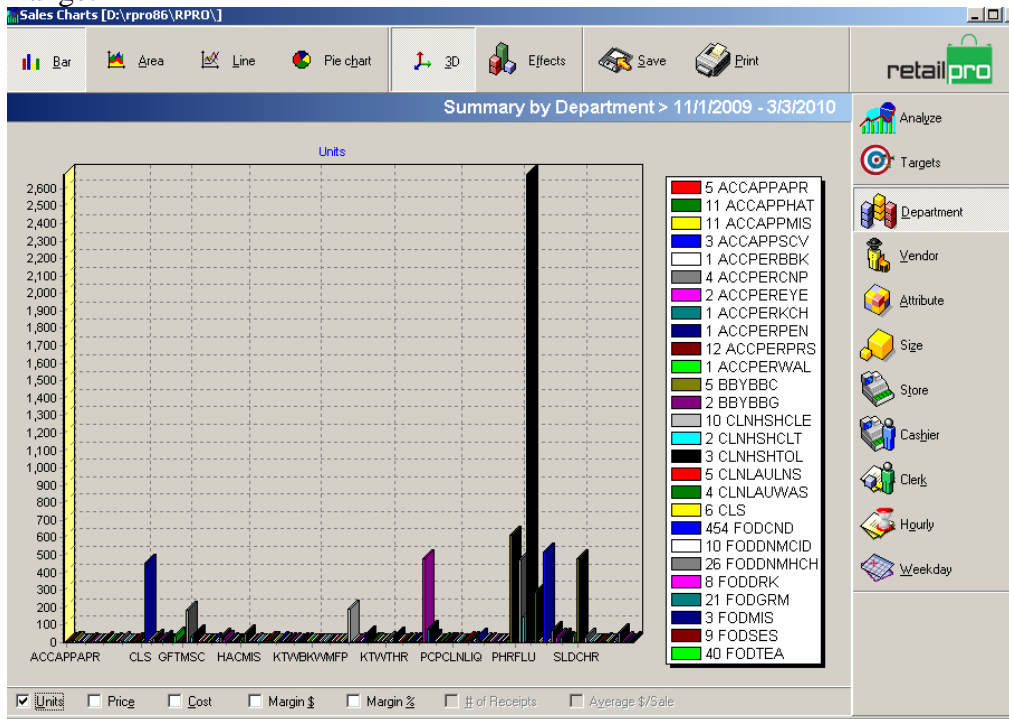
OVERVIEW: Sales charts are a great way of having an overview of your sales in a quick and easy to read graph.

1. Go to Analysis -> Sales Charts

- You will get a screen that looks like the following screen. If you don't, you can click on Analyze to get the date range selection to come up.



- Set your date range you wish to analyze and it will give you a graph for that date Range.

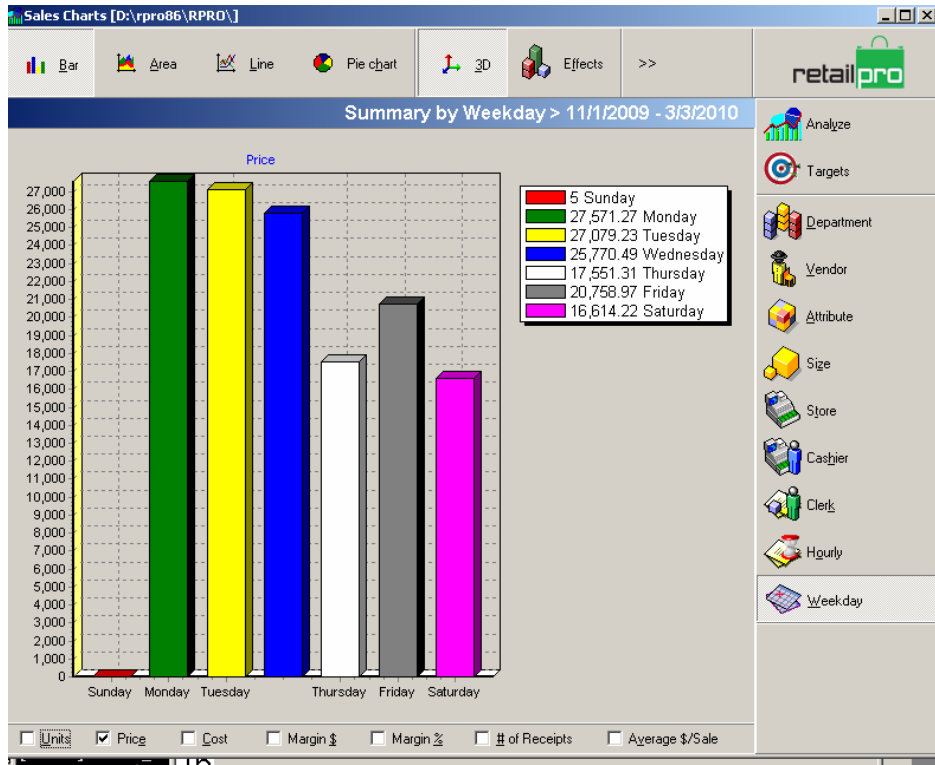


4. On the right you have several options of what information you want the graph to show. You can choose one of the items on the right:
 - a. Department – Gives you the sales breakout for your departments. There is a limited number of departments it will show
 - b. Vendors – Same as the departments but for your vendors. There is a limited number of Vendors it will show.
 - c. Attribute – If you use attributes with your styles it will show you those sales for the attributes
 - d. Size – Same as Attribute but for the sizes within styles.
 - e. Store – Useful for multi-store companies to see a quick overview comparing stores to each other.
 - f. Cashier – Shows the information for the cashier on receipts
 - g. Clerk – shows information about your sales Associate.
 - h. Hourly – Breaks down by hour the sales
 - i. Weekday – Shows sales based on which day of the week

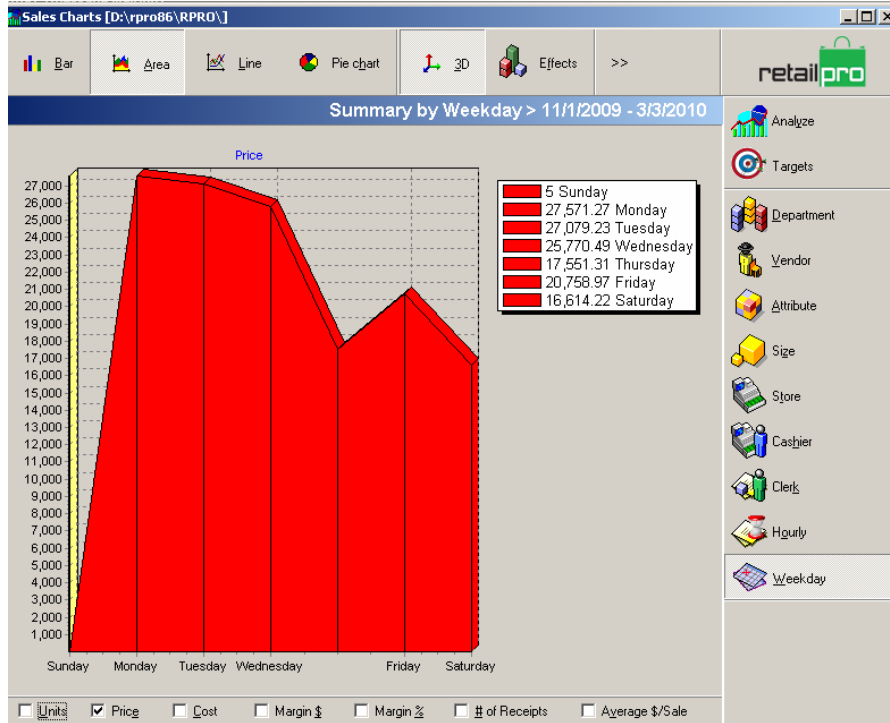
5. On the bottom there are several check boxes you can select. This allows multiple selection of different information
 - a. Units – Total number of items sold for the above information
 - b. Price – Total Price of items sold for the selection
 - c. Cost – Total Cost of the Selection
 - d. Margin \$ - total dollars of margin (profit) for the selection
 - e. Margin % - Margin Percentage for items selected
 - f. # of receipts – Only available when selecting Store, Cashier, Hourly, or Weekly, Gives number of receipts in the date range.
 - g. Average \$/Sale – Gives you the average receipt amount. Only available when selecting Store, Cashier, Hourly, or Weekly.

6. On top there are 4 different types of Charts you can choose (Examples)

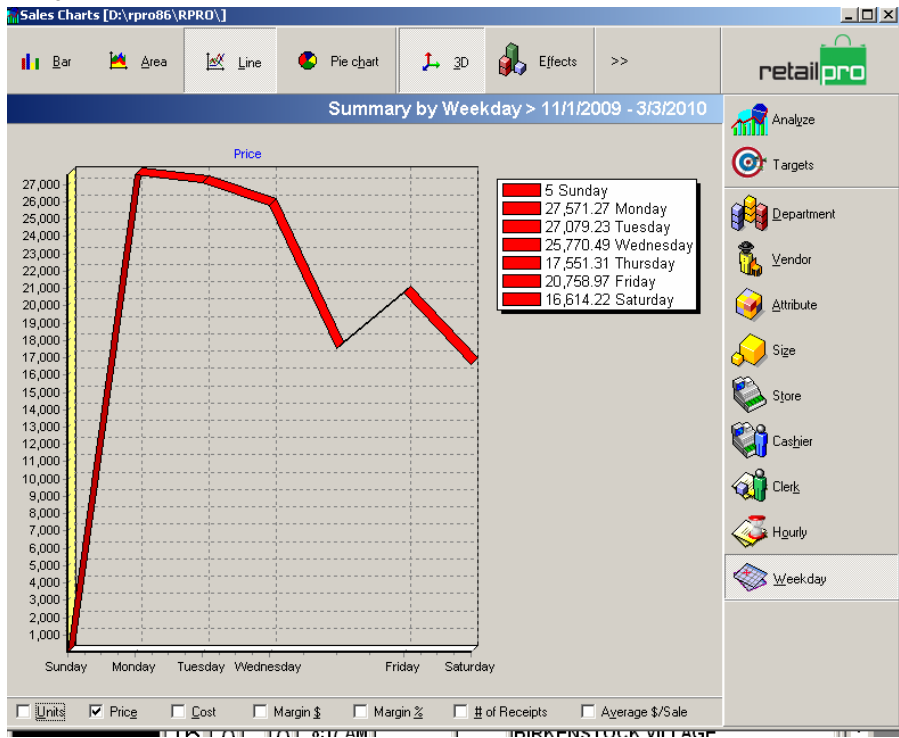
a. Bar



b. Area



c. Line



d. Pie (Only will show one option from the bottom selections)

