

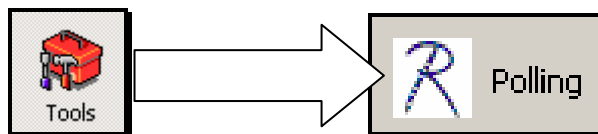


INITIALIZING SECURITY

In Retail Pro v8

The following steps will outline how to poll security (Users & Groups) from the MAIN location out to remote stores in Retail Pro v8. Security does not poll automatically. These steps must be repeated each time security at the MAIN changes and you want the remotes to receive new users or updated group definitions. Please note that initializing security overwrites security at the remotes. Therefore, the MAIN location needs to have ALL users & groups defined.

1. From any workstation at the MAIN location, at the main screen in RPRO select **TOOLS** and then **POLLING**.



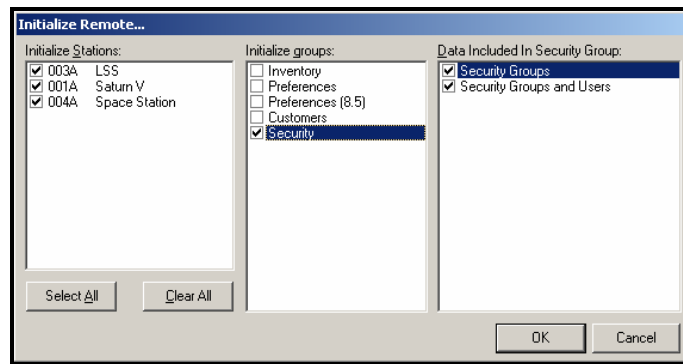
2. When the polling window appears, select **STATIONS** in the upper left.



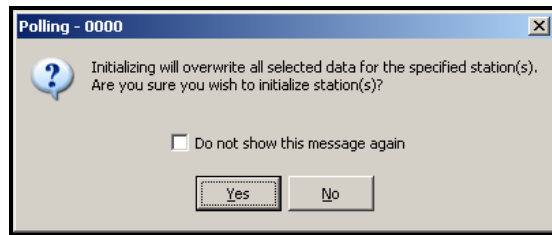
3. Select the **INITIALIZE** button from the side toolbar.



- In the window that appears, click the **SELECT ALL** button in the bottom left corner. In the middle of the window check the box to the left of **SECURITY**. Once the window that appears similar to the one below, select **OK**.



- If the window below appears, select **YES**.



- After a *PROCESS OUT* window appears briefly, you will be returned to the main list of polling stations. Note that there should be a few files in the **SEND** column of each remote station waiting to be polled.

| Name | Station | Last Connect | Last Proc Out | Last Proc In | Send | Rcvd |
|---------------|---------|--------------|---------------|--------------|------|------|
| LSS | 003A | | 3/23/2007 8:5 | | 3 | 0 |
| Saturn V | 001A | | 3/23/2007 8:5 | | 3 | 0 |
| Space Station | 004A | | 3/23/2007 8:5 | | 3 | 0 |

- At this point you are done initializing security, and simply need to exchange the information with the remote stores. This can be accomplished by either (1) quick polling with each remote location and have them exit & reopen Retail Pro to see the new security or (2) allowing scheduled polling to happen overnight.